

## Chess Paintings in Mixed media on paper

Watercolor is a medium which the German artist Elke Rehder sometimes uses in combination with pastel and charcoal drawing. This technique is often specified as "Mixed Media". Many of her chess paintings are made in this technique.



*The e-Pawn*



*Protection needed Pawn*

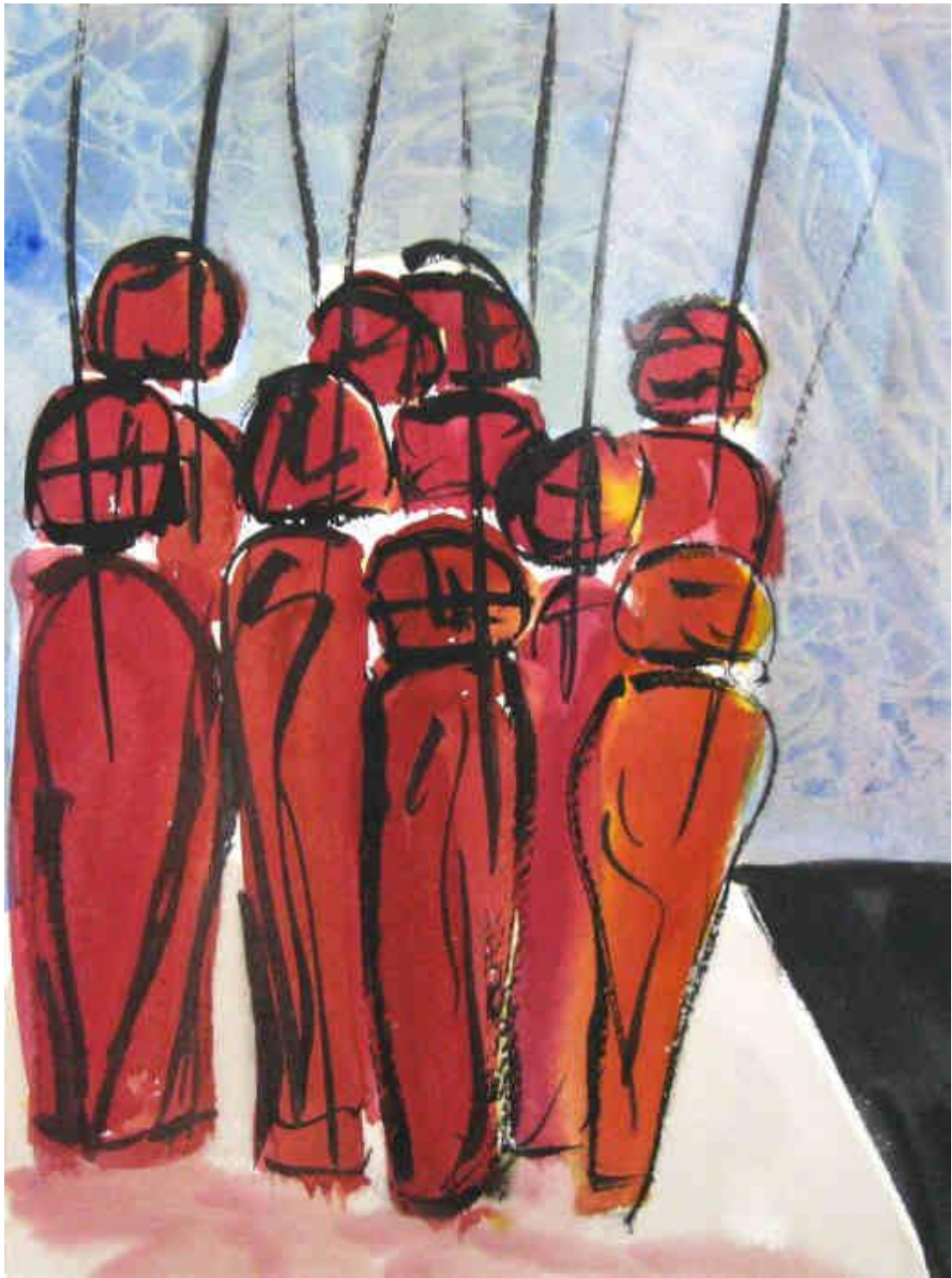


*Backward Pawn*



*Push Hard I*





Pawns Meeting



*Push Hard II*



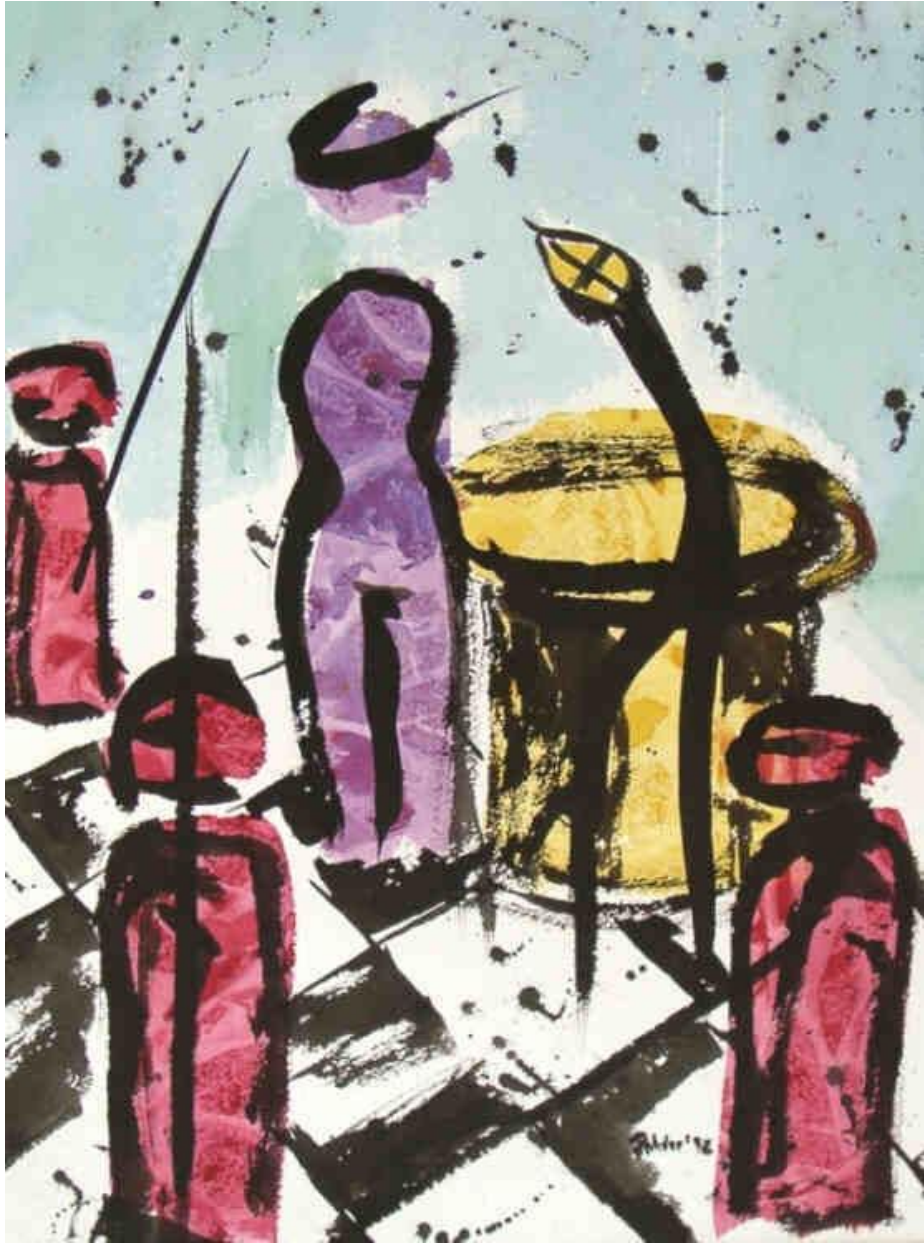
*Pawns Barrier*





*Violent Attack*





*The Queen is in the Center*



*Daring Attack*



*Triumph of the Defense*





*Bishop in Attack*



*Pawns Avalanche*



*Chess Crash*





*Key Position*



*Isolated Pawn*



*Checkmate II*





*Draw "Remis 1990" two kings in a draw*

Please visit my German website

<https://www.elke-rehder.de>

More information about me at

[https://en.wikipedia.org/wiki/Elke\\_Rehder](https://en.wikipedia.org/wiki/Elke_Rehder)