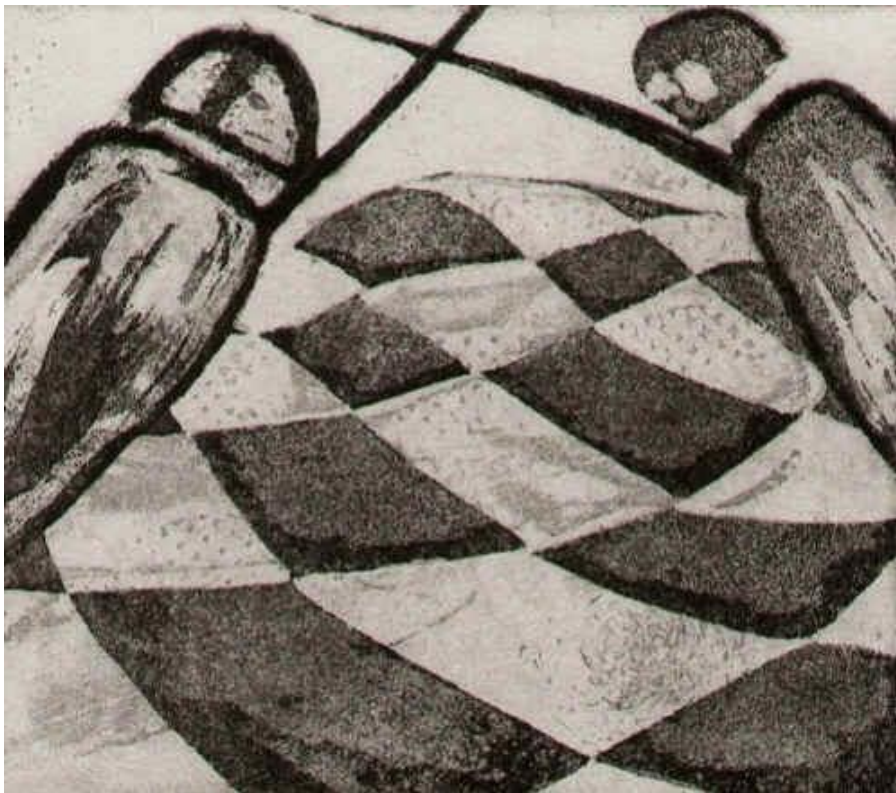


Chess etchings by the German artist Elke Rehder

Etching is the process of using strong acid or mordant to cut into the unprotected parts of a metal surface to create a design in intaglio in the metal.

Aquatint is an intaglio printmaking technique. Like etching, aquatint uses the application of acid to make the marks in the metal plate. Where the engraving technique uses a needle to make lines that print, aquatint uses powdered rosin to create a tonal effect.

The etchings were printed in my studio. Different etching techniques were employed. The gravure ink was wiped out on the zinc plates by hand and so the individual etchings vary.



The Fight



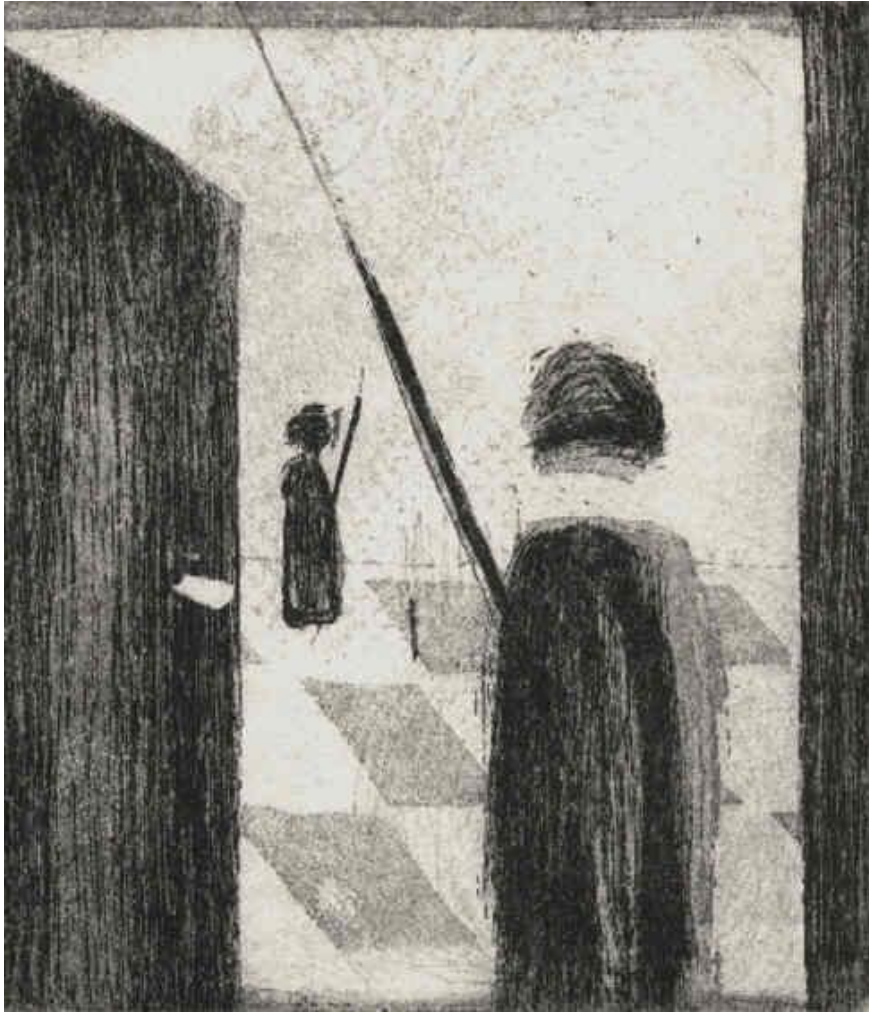
Irrational Position



Pawns and Rook



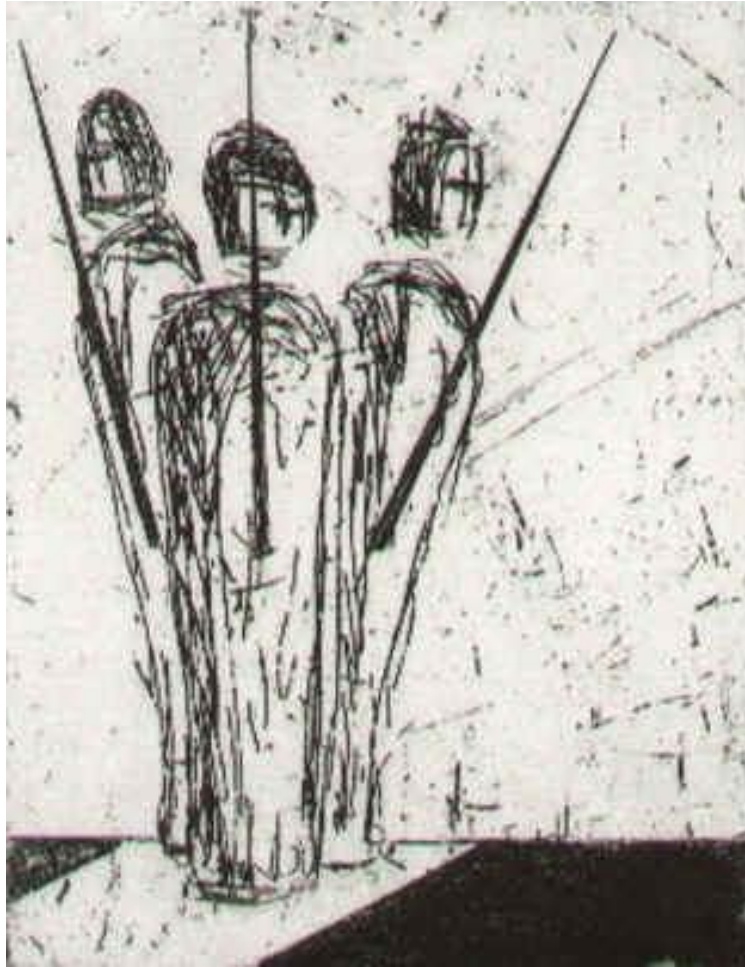
Front of Pawns



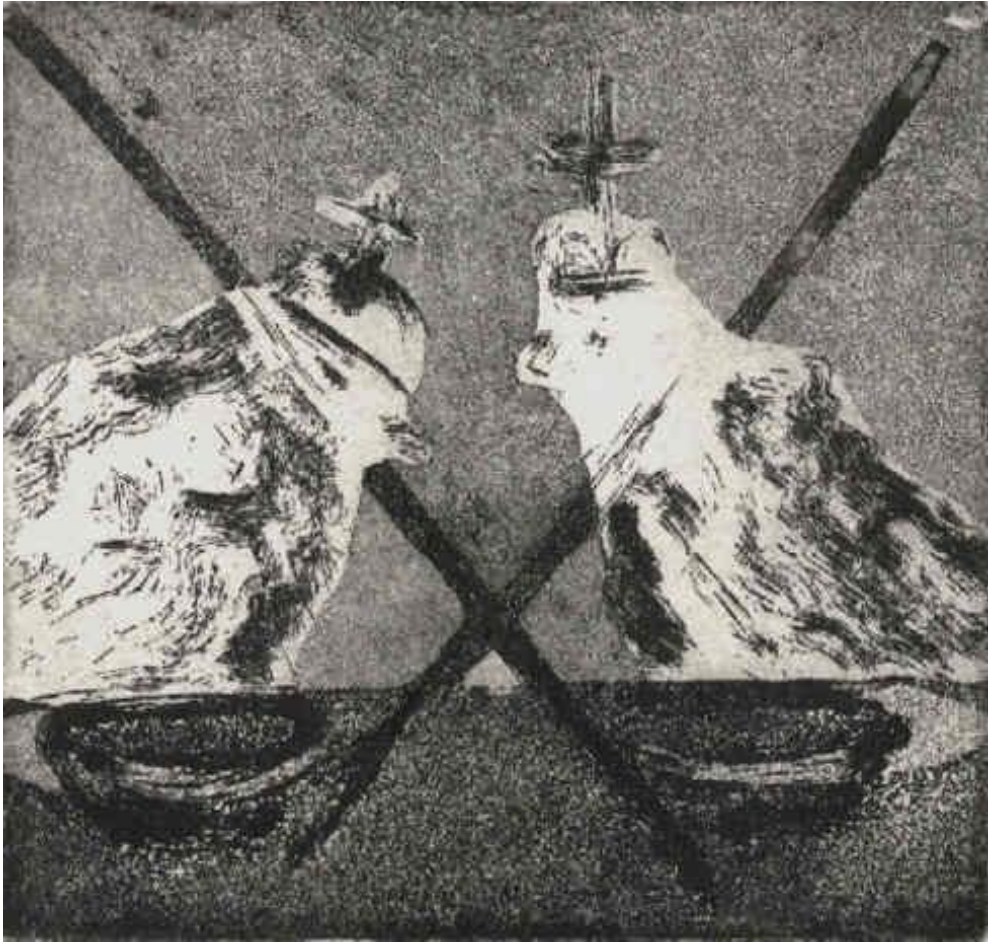
The Opening Move



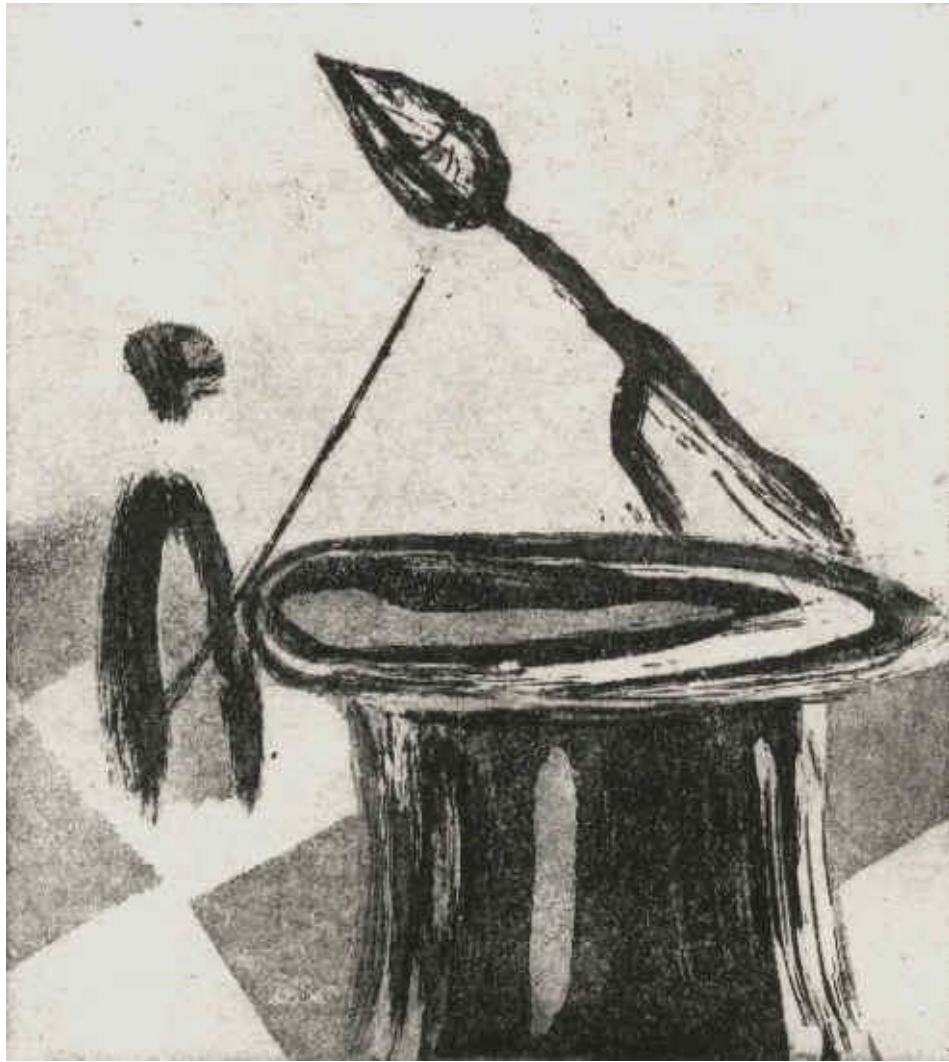
Dragon Variation



Three Pawns for Bartkowiak forum book art



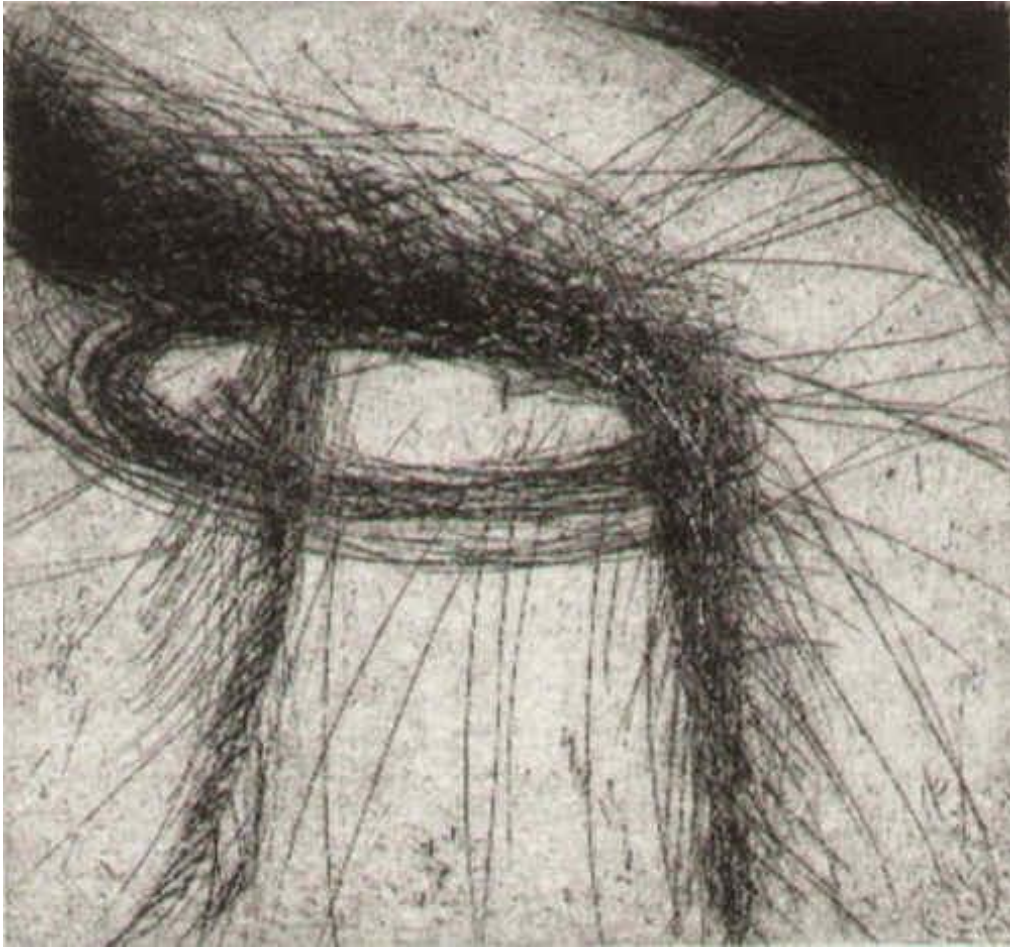
Draw - Remis



Bishop b3



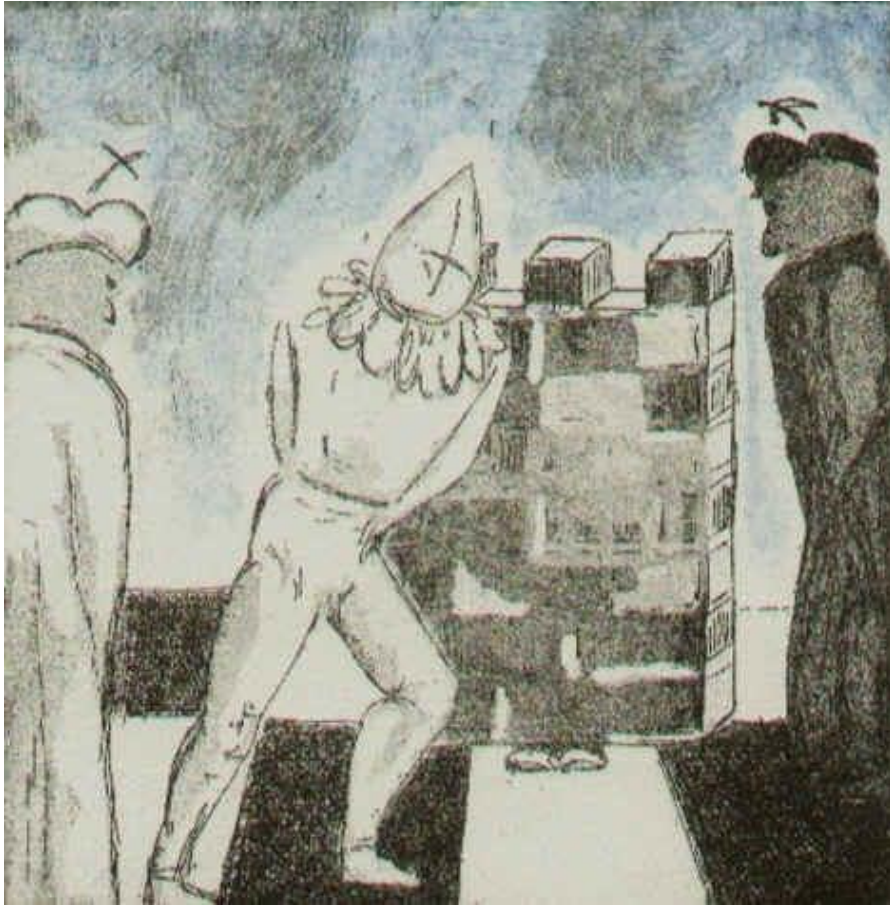
Knight takes Rook 1994



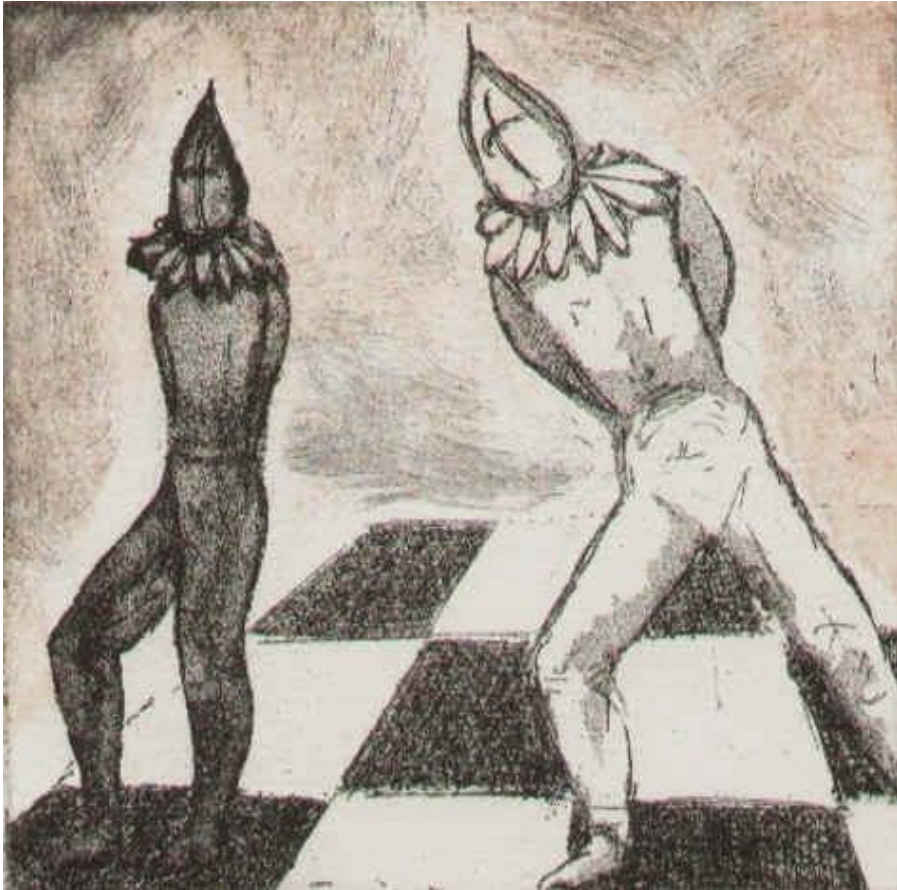
Rook (drypoint etching)



Under the Guidance of the Knight



Let us not deceive ourselves



The crucial step



The hollow strokes of a knife



The Folk



The last pawn counts



The Queen determines the game



The Majesties



Three Pawns



Pawns threaten the King

Please visit my German website

<https://www.elke-rehder.de>

More information about me at

https://en.wikipedia.org/wiki/Elke_Rehder